

## Adjusting your LCD Arm

### Height Adjustment



Use the 1/4" allen wrench (provided), insert into the hole on the top of the end cap.

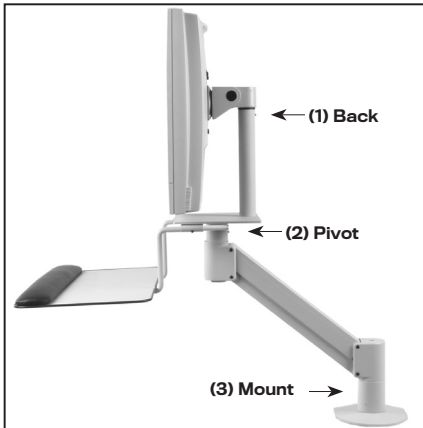
#### IMPORTANT:

With one hand, hold the arm in a horizontal position, while turning the allen wrench with the other hand to make the weight adjustment.

To increase the weight for heavier monitors, turn the wrench left (counter clockwise). To decrease the resistance for lighter monitors, turn the wrench to the right (clockwise).

### Friction Adjustments

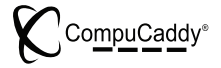
Each joint on your new monitor arm has a built-in set screw that allows you to set the degree of friction and ease of movement of that pivot point.



These friction adjustments are located:  
(1) Top of the back adapter  
(2) Back adapter's pivot point  
(3) Mount base.

Insert the 3/32" Allen wrench (provided) into the appropriate set screw and tighten or loosen to the desired degree of joint friction.

Your assembly and modifications are complete. If you need additional assistance regarding this product or if you need to return this arm for any reason, please contact our customer service department at 800.524.2744 to obtain a Return Authorization Number (R/A).



Innovative Ergonomic Solutions companies

## Model 9140 Combination LCD & Keyboard Arm



## Installation Instructions

### Step 1 Arm Assembly

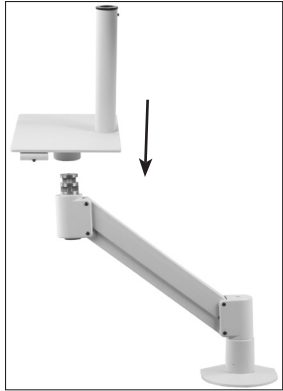
Be sure the mount is securely fastened to the surface before beginning.



Insert the pole of the arm assembly into the mount. (Mount configurations will vary).

Insert the shaft of the Arm assembly into the mount as shown.

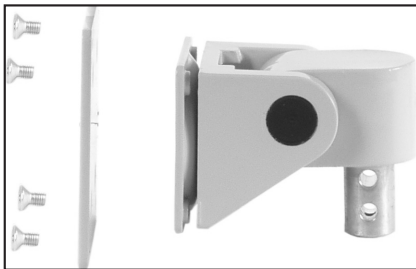
### Step 2 Attach the Back Adapter to LCD Arm



Align the opening on the bottom of the back adapter with the shaft on the end of the arm.

Slide the back adapter onto the shaft and tighten the set screw using the 3/32 allen wrench that is provided.

### Step 3A Attach Tilter/VESA bracket to the monitor



Carefully remove the base from the flat panel monitor. (See your monitor's User's Guide for instructions on how to do this.)

Attach the adapter plate (75MM or 100MM) to the tilter mechanism, using four (4) #10-32 x 3/8" Flat Head Philips screws.

### Step 3B VESA Bracket Assembly Continued



Align the tilter and VESA bracket with the hole pattern on the back of the flat panel monitor.

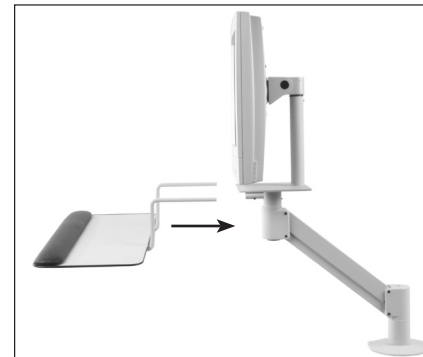
Use the four (4) M4-12 Philips Pan Head screws to attach the plate to the back of the LCD monitor.

### Step 4 Attach Monitor to LCD Arm



After the tilter is attached to the monitor, slide the shaft of the tilter into the top of the back adapter and tighten the set screw with the 3/32 allen wrench.

### Step 5 Attach Keyboard to LCD Arm



Slide the Z bars from the keyboard platform into the 2 welded holes in the bottom of the back adapter.

Slide in until you reach the desired extension and tighten using the 3/32 allen wrench that is provided.